

KCS



บริษัท เค แคสติ้ง แอนด์ โซลูชั่น จำกัด

K CASTING AND SOLUTION CO.,LTD.

.....
Aluminum High Pressure Die Casting



www.kcasting.co.th

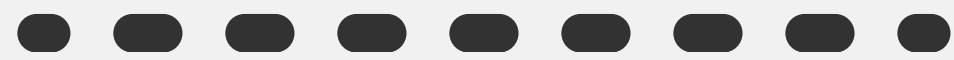


KCS



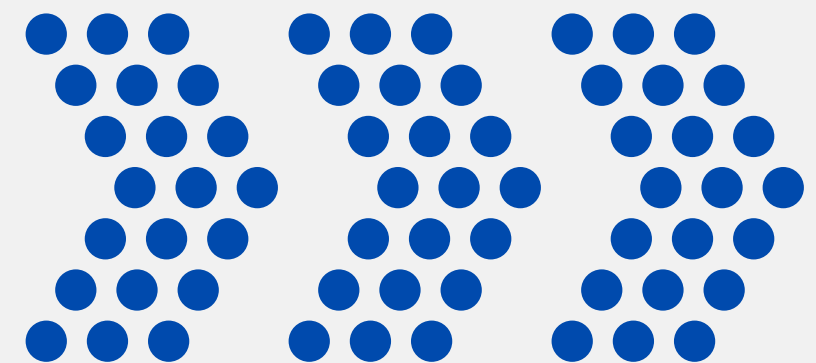
KCS

About Us



K Casting and Solution Co., Ltd. is the best choice company that manufacture the aluminum part from the die casting such as auto part, motorcycle part and electronic part by the professional team that has experiences for more than 30 years.

We have an ability to meet all the customer requirements, prices, quality and delivery.



COMPANY OVERVIEW

Product

- Automotive
- Heating, Ventilation, and Air Conditioning (HVAC)
- Industrial and power tools
- Hand tool and electronics
- Home and Factory
- Molds and jigs Fixture

Location

 Nakhonratchasima, Thailand

Established : Dec, 2011

Founder : Mr.Therdsak Detpanya

Share holder : Thai 100%

OUR VISION

"We strive to be the best aluminum die casting manufacturer with the best quality to provide total customer satisfaction"



OUR MISSION

"To control the quality of the entire integrated process and continuously improve the working skills of our team, Also keep up with new technology and support equipment to coordinate and communicate with customers and suppliers as quickly as we could. Lastly, To cooperate with public and private institutions to enhance the knowledge and strength of our company."

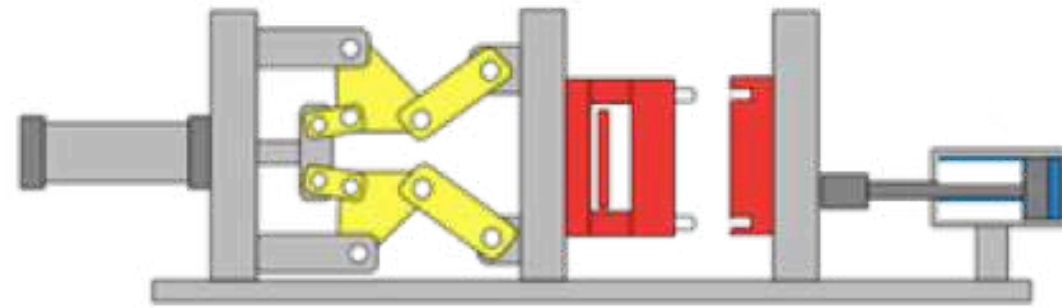
OUR PRODUCTION



Receive
Material



Melting



Die casting



Finishing :
Sand shotblast / Barrel



Delivery



Final Inspection



Check & Packing



Machining



MACHINE CAPACITY

DIE CASTING MACHINE



Die Casting machine 1 set

TOSHIBA 135 Ton

Die Casting machine 6 sets

TOSHIBA 350 Ton

Heat Treatment Oven 3 sets

MACHINE CAPACITY

MACHINE



CNC Lathe
15 sets



Machining Center
12 sets



Water Leak Test
1 set

MACHINE CAPACITY

DEBURRING MACHINE



Shot blast
3 sets



Barrel
3 sets



Trimming Machine
3 sets



Grinding Machine
3 sets

MACHINE CAPACITY

MEASURING INSTRUMENT



Coordinated Measuring Machine

Spectrometer

Density meter

Contour Measuring Machine

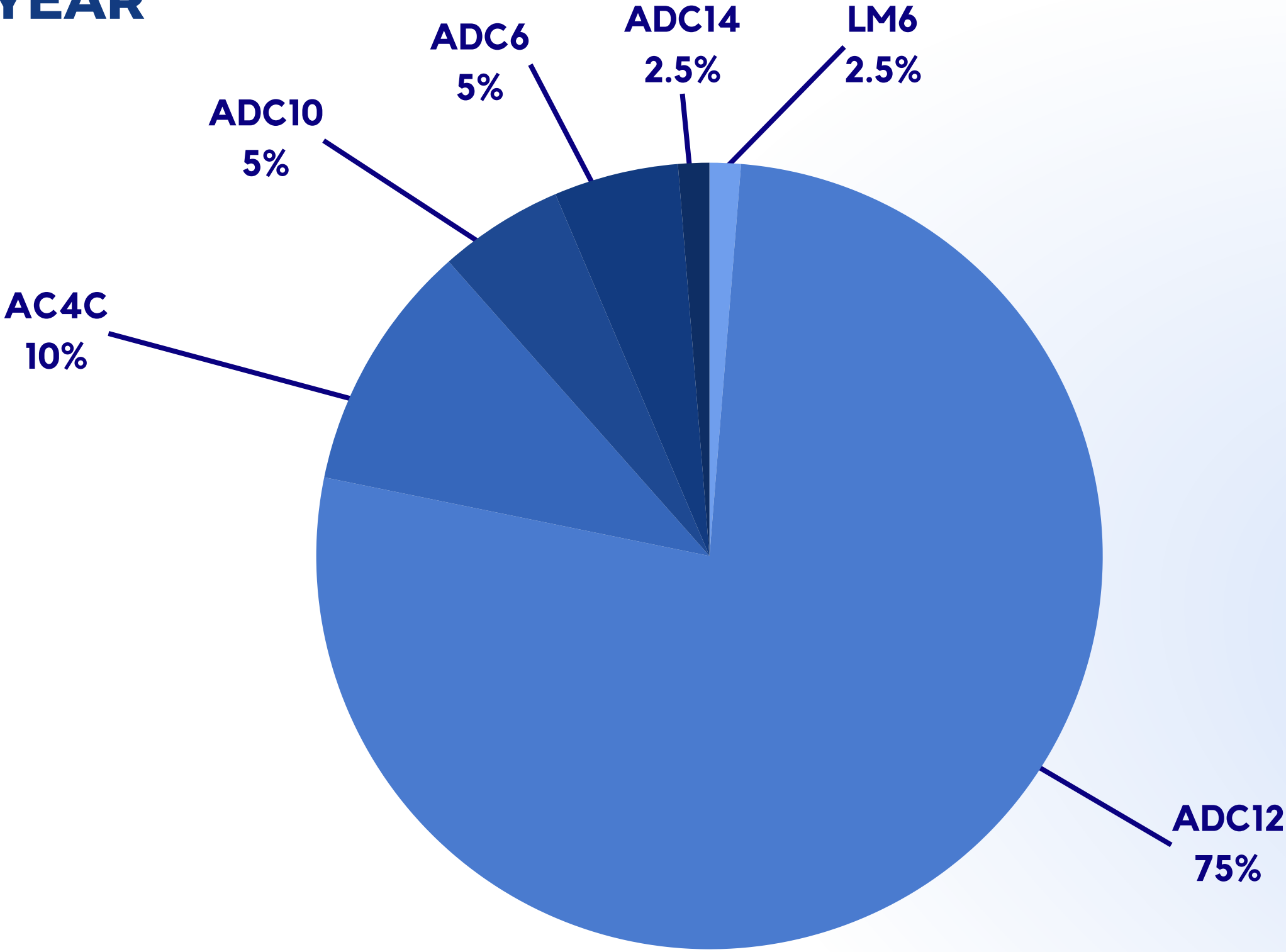
Roughness Test

Hardness Tester

Microscope

ALUMINUM USAGE

480-500 TONS/YEAR



Our Product



Motorcycle Part



Shock Absorber



Break Fluid Tank Cap



Lever



Knocker



Break Shoe



Cylinder Engine Cap

Our Product



Heating Ventilation Air Conditioning
(HVAC)



Plate Lower Seal



Bearing Housing



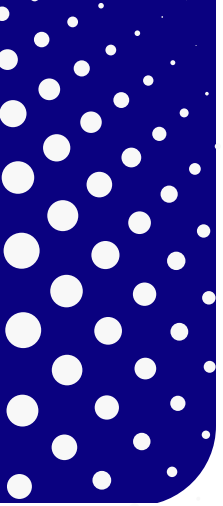
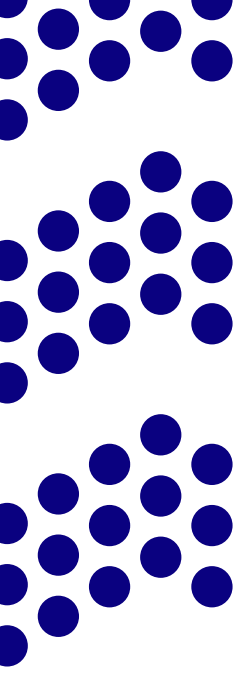
Lower Bearing



Tube Passage



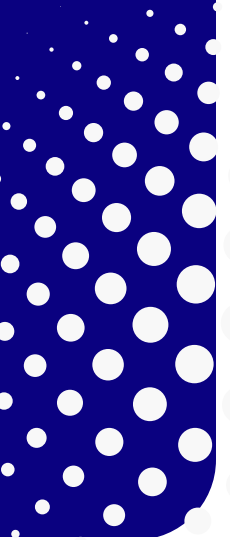
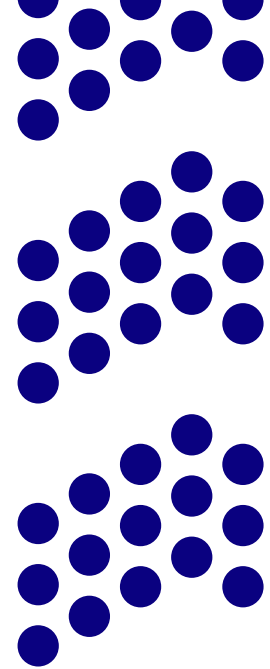
Coupling Oldham



Our Product



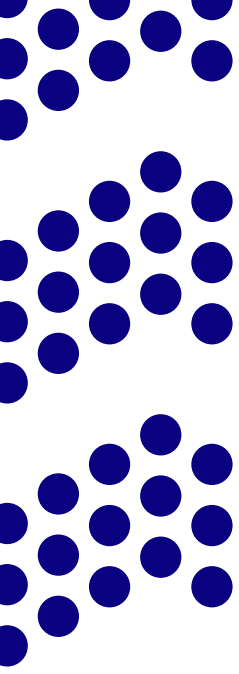
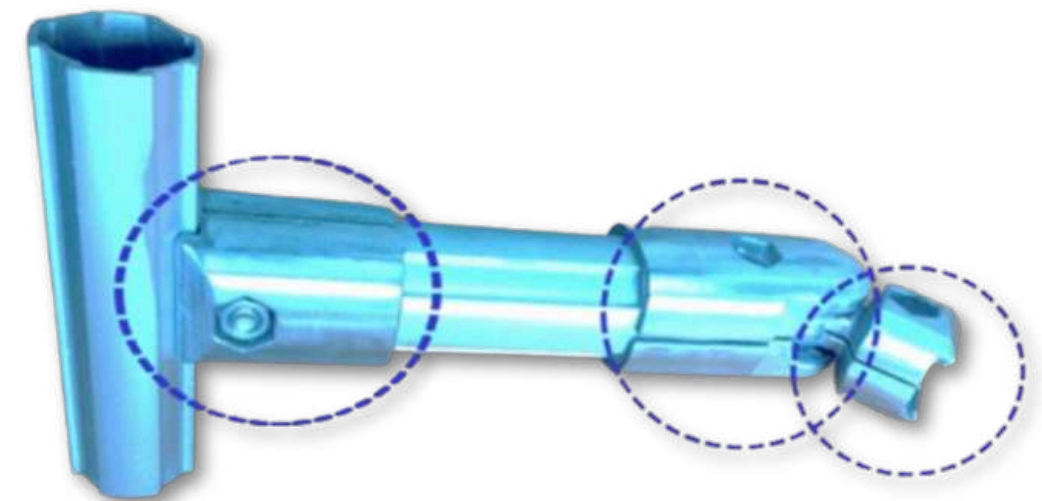
Industrial Powering Tools



Our Product



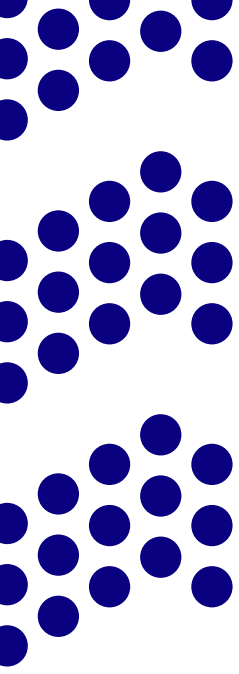
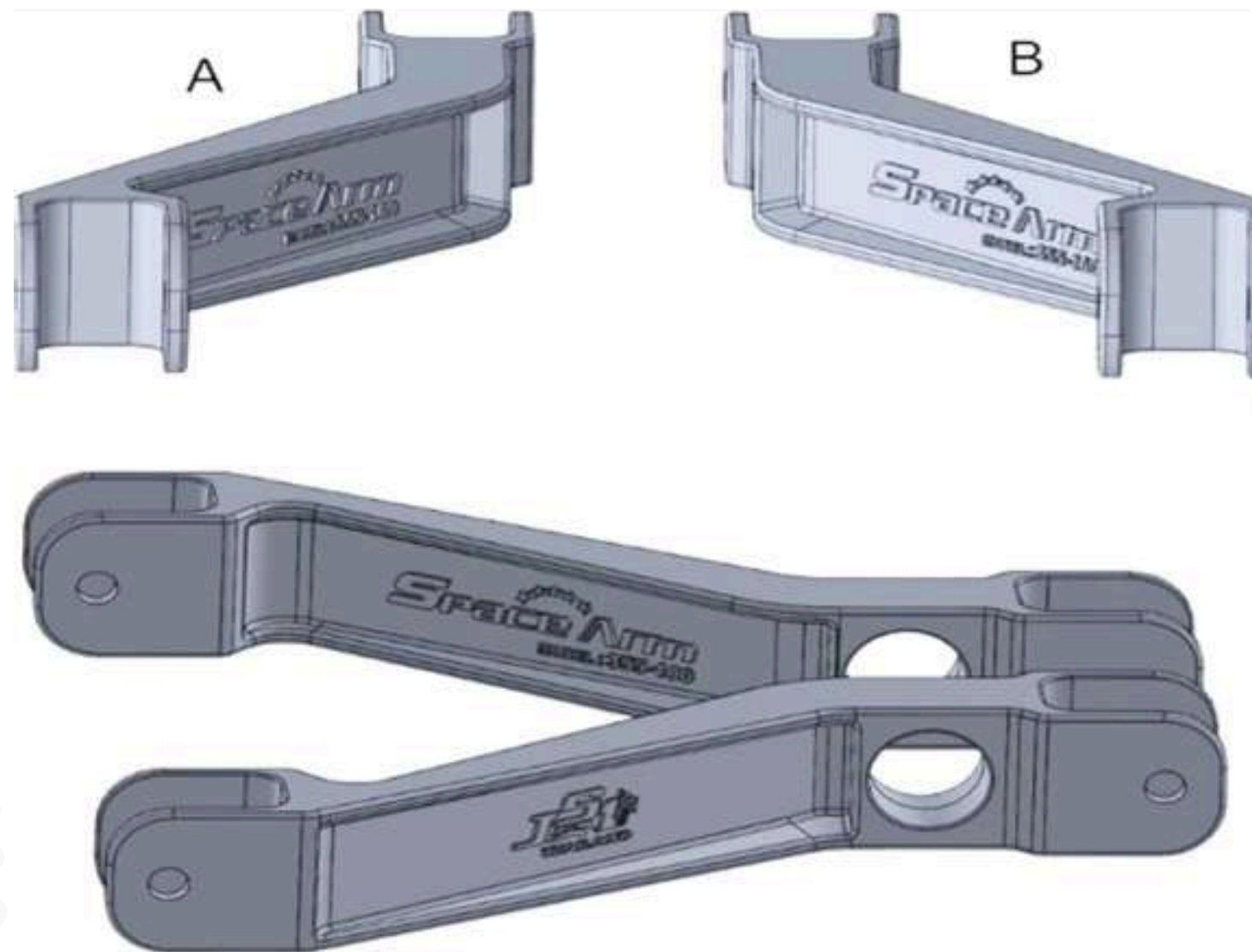
Home & Factory Automation



Our Product



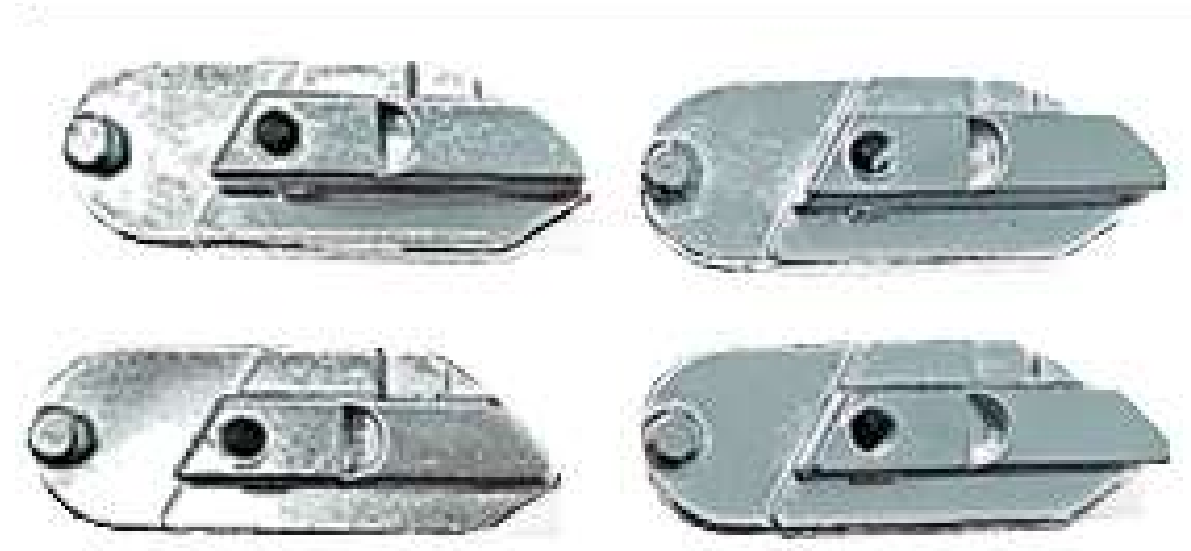
Balance Arm / Space Arm



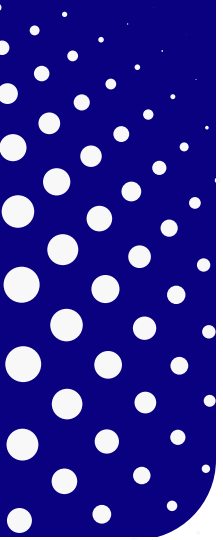
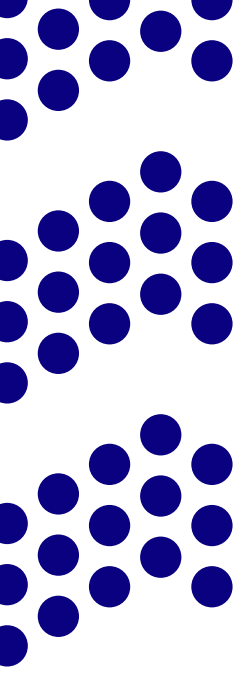
Our Product



Hand Tool Parts



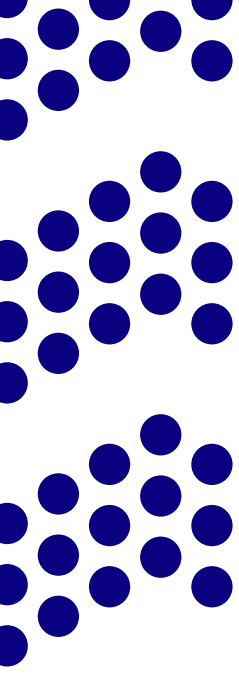
Electronic Parts



Our Product



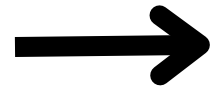
Music Equipment (Expression Pedals)



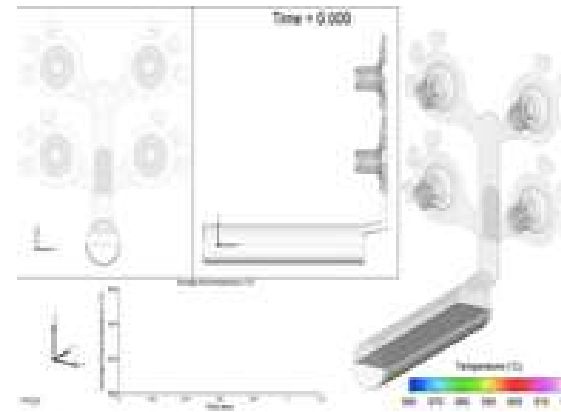
MOLD DESIGN PROCESS



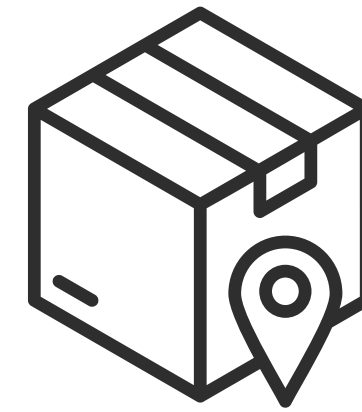
Customer
Kick off



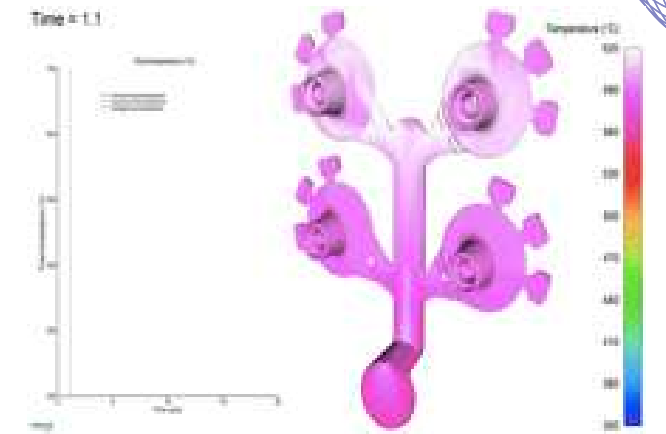
Concept
Design



CAD Design
(3D)



Material
Order



CAM Design

Nitriding



Trial



Assembly



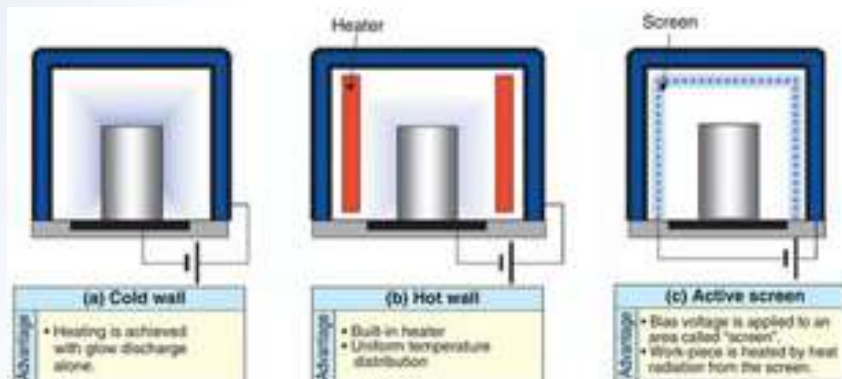
Finishing
Process



Heat
Treatment



Mold Making



MOLD CAPACITY

MOLD MAKING MACHINE



License Software
for CAD/CAM



Machining Center



MC Milling



Lathe

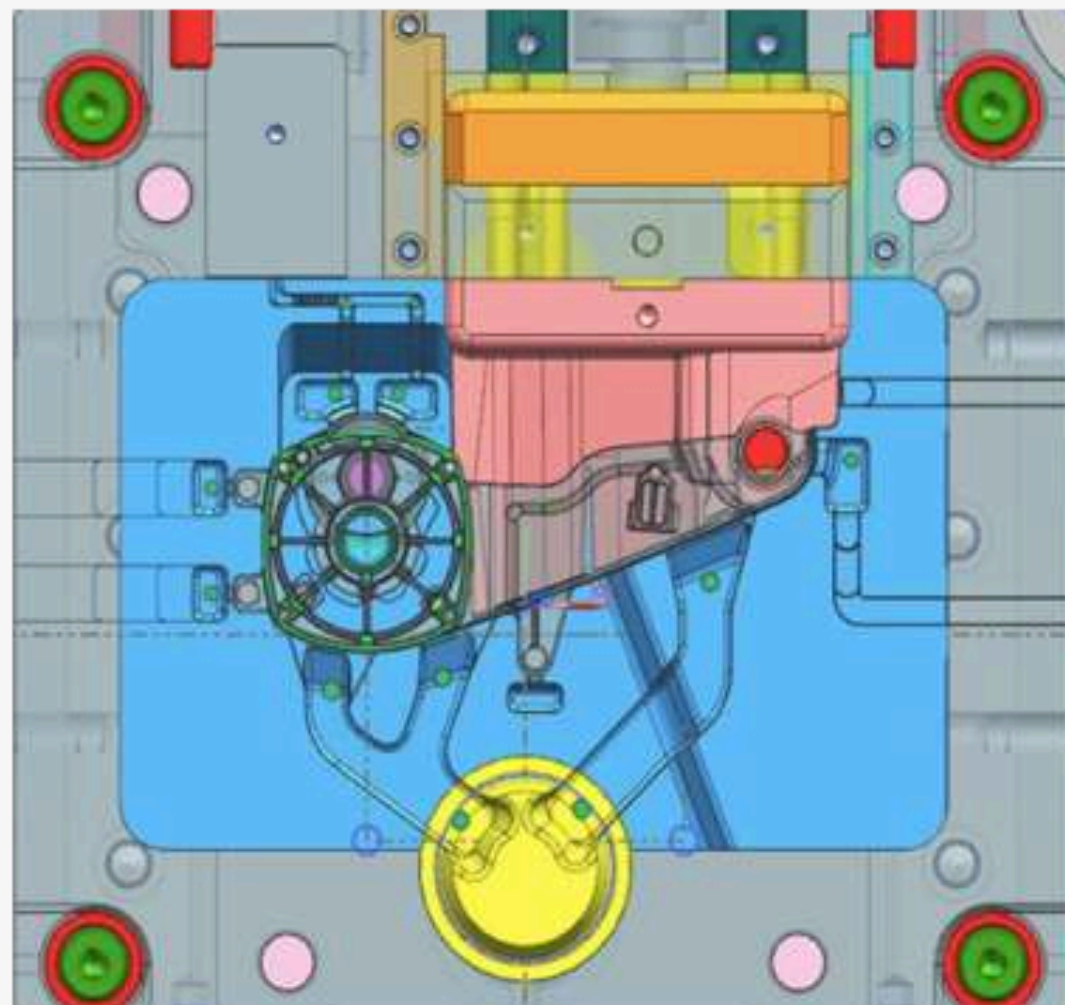
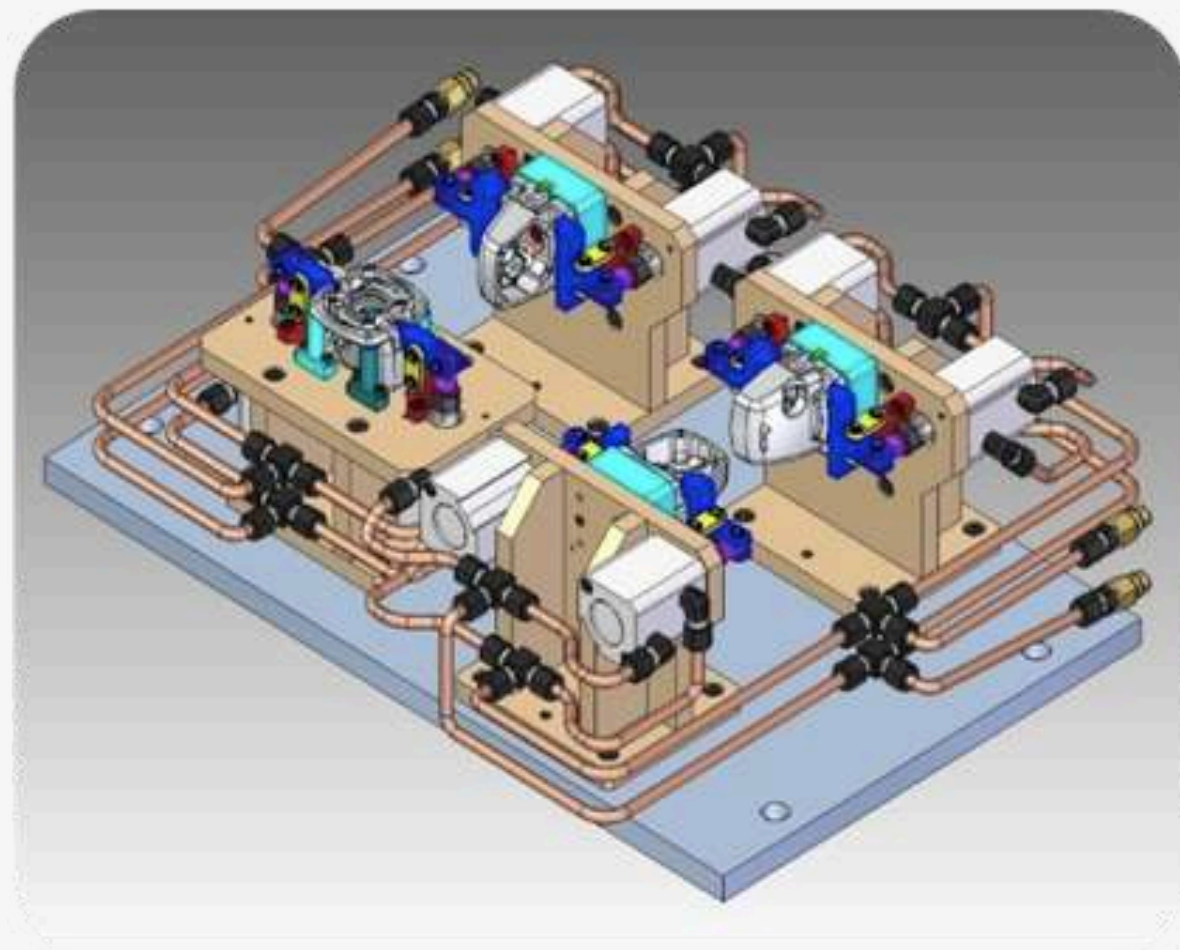


NC Milling

Our Experiences



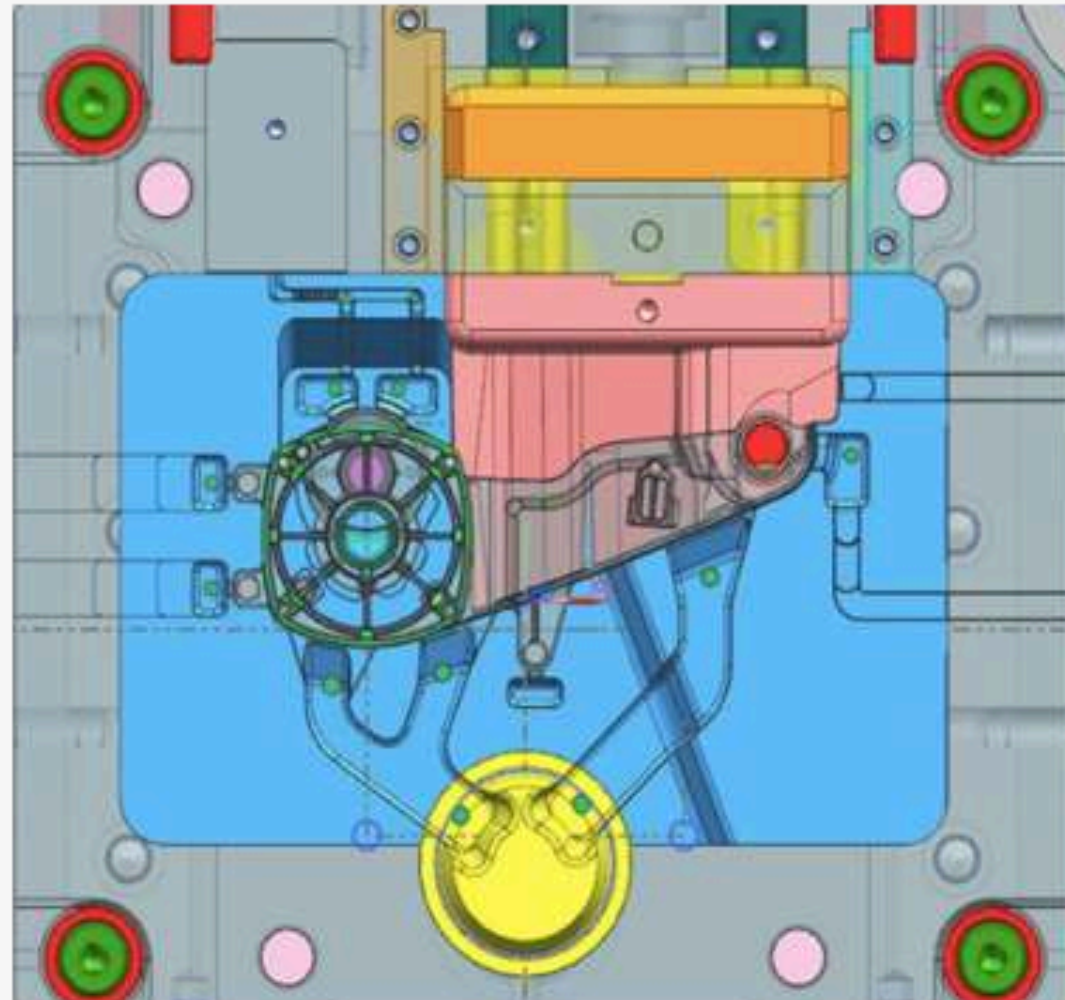
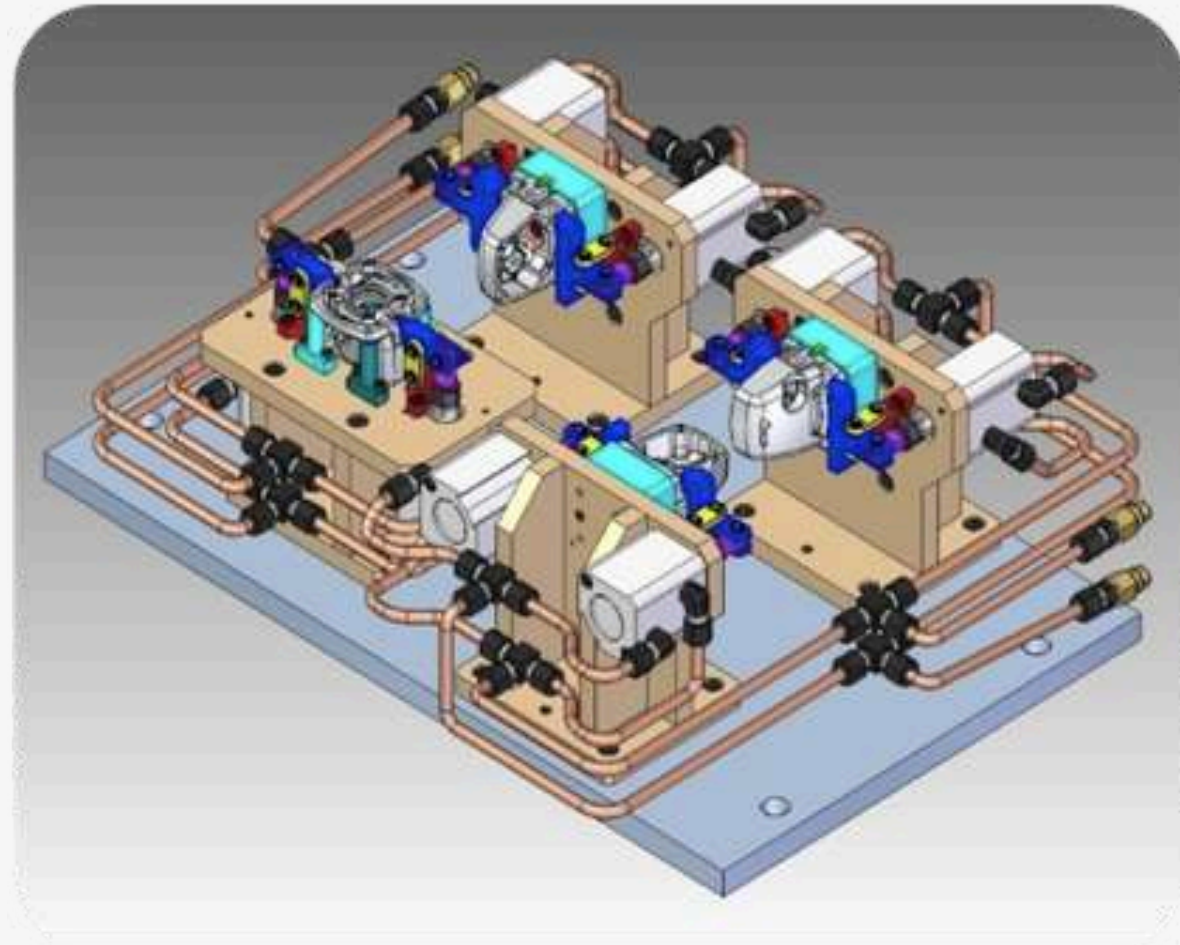
Mold & Jig Fixture shop



Our Experiences



Mold & Jig Fixture shop



KCS

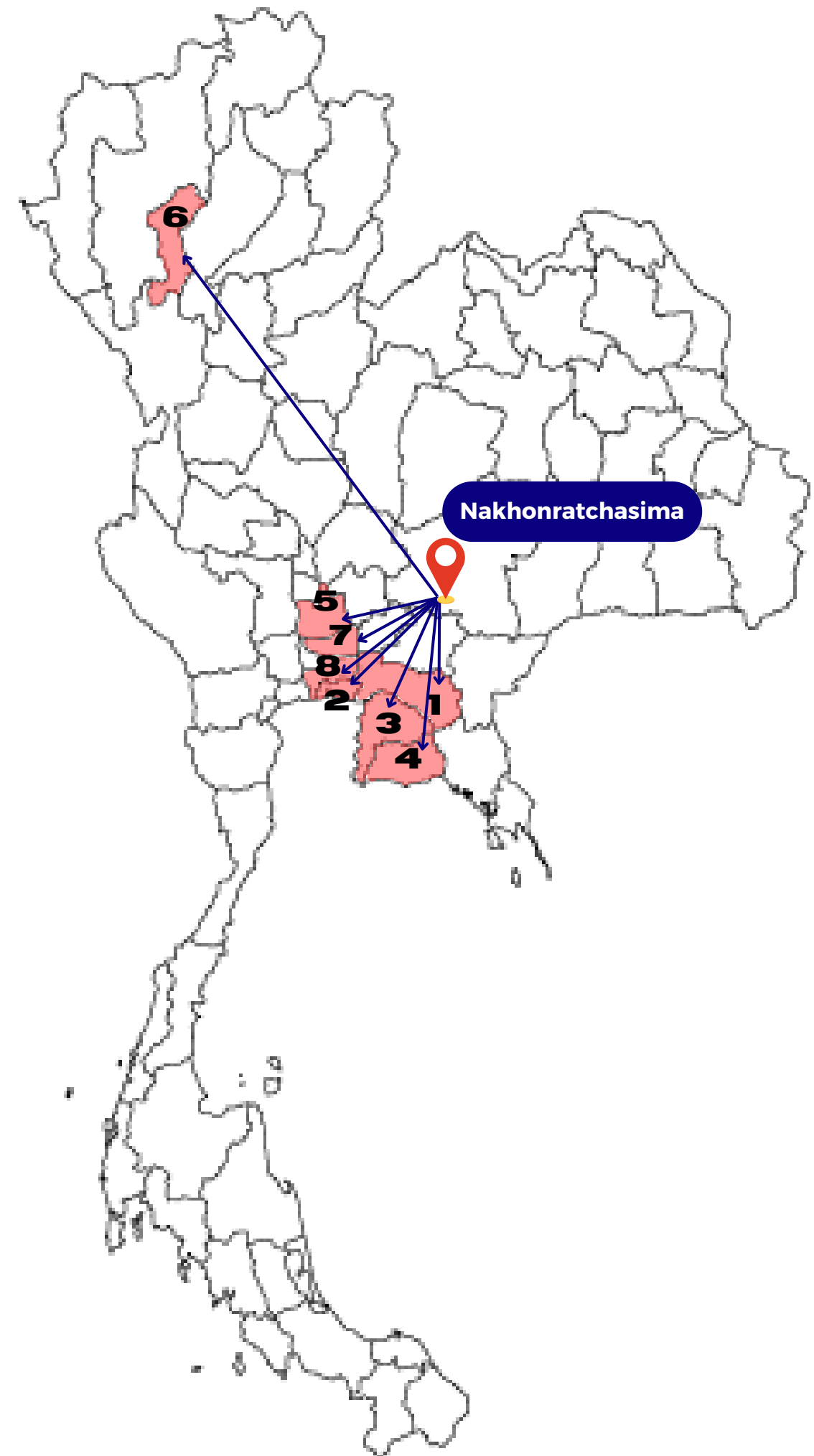
TRANSPORTATION

supplier support transportation to customer everyday



Nakhonratchasima

1. CHACHOENSAO
2. SAMUTPRAKRAN
3. CHONBURI
4. RAYONG
5. AYUTTHAYA
6. LAMPUN
7. PATHUMTANEE
8. BANGKOK



DOMESTICAL

1. MAKITA MANUFACTURING (THAILAND)
2. Y.S.S. (THAILAND) PUBLIC COMPANY LIMITED.
3. SZ AUTO CRAFT CO.,LTD. (HEAD OFFICE)
4. STANDARD UNITS SUPPLY (THAILAND) CO.,LTD. (HEAD OFFICE)
5. COPELAND (THAILAND) LIMITED (HEAD OFFICE)
6. NEDEC (THAILAND) CO., LTD. (HEAD OFFICE)
7. HITACHI ASTEMO KORAT BRAKE SYSTEMS LTD. (HEAD OFFICE)
8. SLIK (THAILAND) CO.,LTD. (HEAD OFFICE)
9. STANDLEY WORK (THAILAND)
10. MPI-NEO CO.,LTD. (HEAD OFFICE)

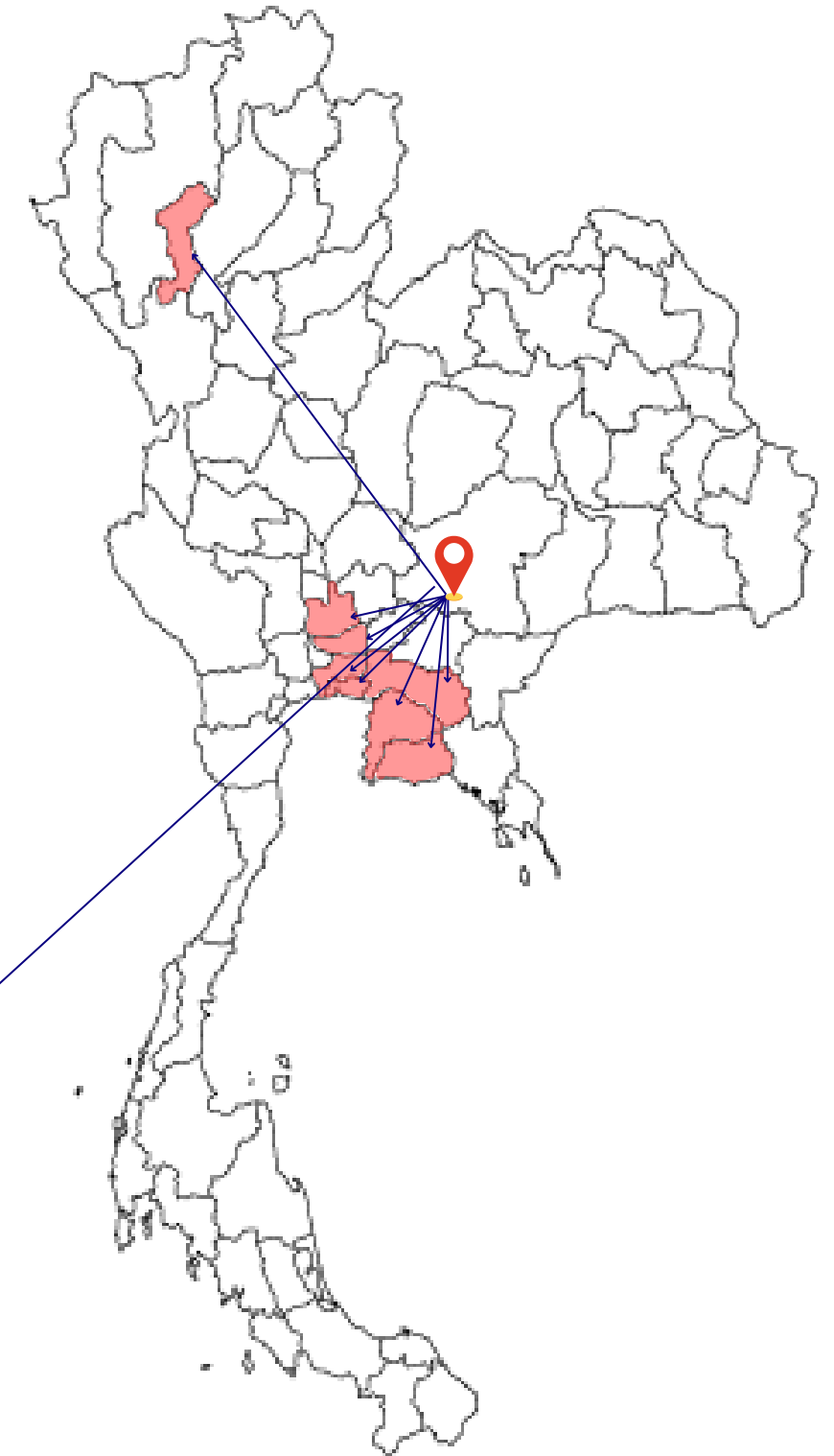
INTERNATIONAL

1. UTS SALES AND REPAIRS

UK



THAILAND



CERTIFICATE OF REGISTRATION

QUALITY STANDARD ISO 9001 : 2015



IATF 16949

**WE ARE COMMITTED TO
DEVELOP AUTOMOTIVE
QUALITY MANAGEMENT
SYSTEM (QMS) IATF 16949,
WITH CERTIFICATION
PLANNED FOR 2025.**



Certification Partner Global

ISO 9001 : 2015

CERTIFICATE OF REGISTRATION

THIS IS TO CERTIFY THAT THE
QUALITY MANAGEMENT SYSTEM OF

K CASTING AND SOLUTION CO.,LTD.

225 M4 T.Pa-Noa, A.Mueang,
Nakornratchasrma
30000
THAILAND

Has been assessed and registered as complying with the requirements of the International Standard shown above for the following Goods and Services. Further clarifications regarding the scope of this certificate and the applicability of ISO 9001 : 2015 requirements may be obtained by consulting the certificate issuer.

Manufacturing of Aluminium Die Casting



JAS-ANZ



www.jas-anz.org/register

Tony Wilde
Group Chairman

Registration Number:	QAC/866/0201
Original 9001 Registration Date:	30-Sep-2019
Current Registration Date:	30-Sep-2019
Expiry Date:	30-Sep-2022
Amendment Date:	

CPG License # 11982011 CC (previously known as IAC Globely, Building 11, 7th Floor, Bay Square, Business Bay, Dubai, UAE.

The Status and Validity of this Certificate can be verified in real time by scanning the adjacent QR Code.
This certificate is valid until the Expiry Date shown on the condition that audits are conducted each year and paid for as per the Certification Agreement. Should this condition not be met, cancellation procedures will be initiated, and the cancellation status will be revealed when the QR Code is scanned.

This Certificate remains the property of the Certificate Issuer and must be returned upon request. It must not be altered in any way. Intentional misuse of this certificate will result in cancellation without prior notification.



QAC/866/0201

MAIN CUSTOMERS



**MAKITA MANUFACTURING
(THAILAND)
(MMT.)**



**Y.S.S. (THAILAND)
PUBLIC COMPANY
LIMITED.**



**SZ AUTO CRAFT
CO.,LTD.
(HEAD OFFICE)**



**STANDARD UNITS SUPPLY
(THAILAND) CO.,LTD.
(HEAD OFFICE)**



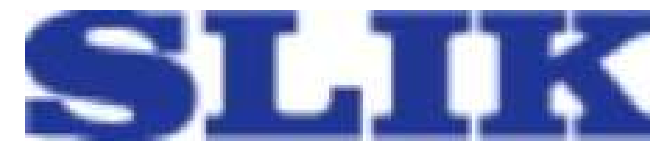
**COPELAND (THAILAND)
LIMITED (HEAD OFFICE)**



**NEDEC (THAILAND)
CO., LTD.
(HEAD OFFICE)**



**HITACHI ASTEMO KORAT
BRAKE SYSTEMS LTD.
(HEAD OFFICE)**



**SLIK (THAILAND)
CO.,LTD.
(HEAD OFFICE)**



**STANDLEY WORK
(THAILAND)**



**MPI-NEO CO.,LTD.
(HEAD OFFICE)**



UTS SALES AND REPAIRS LTD.

LET'S CONNECT WITH US!



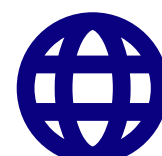
225 M.4 Panao,
Mueng Nakhonratchasima District,
Nakhonratchasima, Thailand, 30000



+6644-221144, +6688-262-2296



info@kcasting.co.th
sale@kcasting.co.th



www.kcasting.co.th

KCS

K CASTING AND SOLUTION CO.,LTD

For more information



please contact

Therdsak Detpanya

Managing Director

+66833833665

therdsak@kcasting.co.th

Phinyo Kaeowichian

General Manager

+66882622296

phinyo@kcasting.co.th

